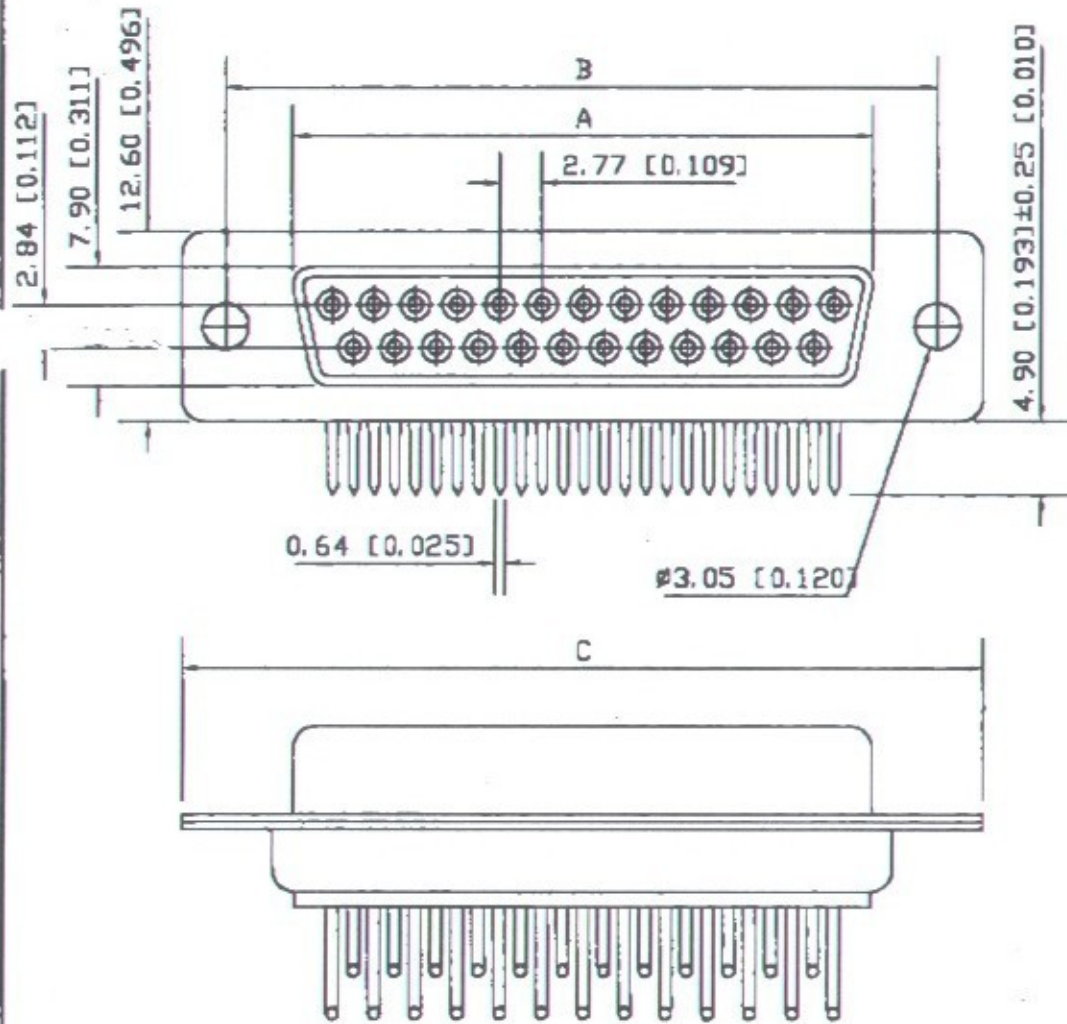


* DPRMM-xx F



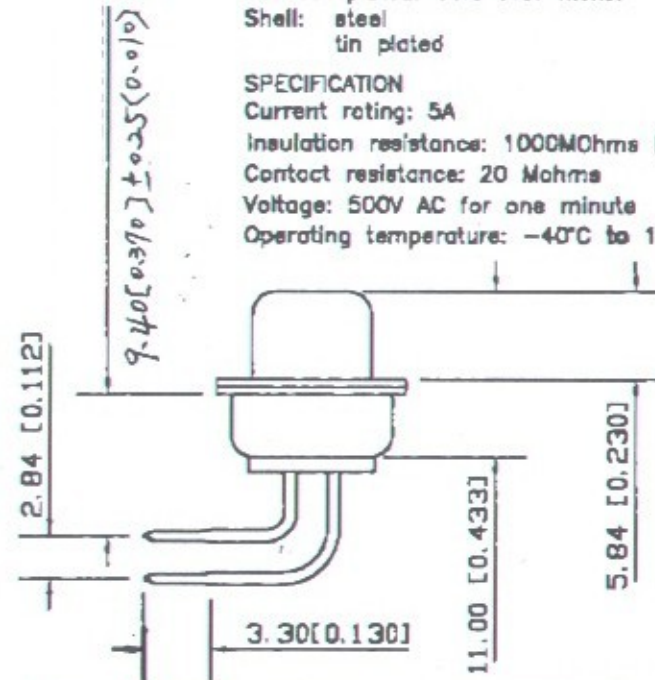
No. of Contacts	A ±0.13/.005	B ±0.13/.005	C ±0.13/.005
09	16.33/.643	24.99/.984	30.81/1.213
15	24.66/.971	33.32/1.312	39.14/1.514
25	38.38/1.511	47.04/1.852	53.04/2.088
37	54.84/2.159	63.50/2.50	69.32/2.729

MATERIAL

Insulator: PBT+30% Glass fiber (UL 94V-0), Black
 Contact: brass
 Contact plated: Gold over nickel
 Shell: steel
 tin plated

SPECIFICATION

Current rating: 5A
 Insulation resistance: 1000Mohms Max
 Contact resistance: 20 Mohms
 Voltage: 500V AC for one minute
 Operating temperature: -40°C to 105°C.



公差
 ANGULAR ±1/2°
 MM X.X = ±0.38 X.XX = ±0.12
 X.XXX = ±0.051
 INCH .XX = ±0.15 .XXX = ±0.005
 .XXXX = ±0.0020

製圖 Shen Der Long
 日期

P/N 3006-11

說明 P.C.B MOUNT RIGHT ANGLE
 D-SUBMINIATURE CONNECTORS
 MACHINE PIN FOR FEMALE

麒升工業有限公司

單位
 mm/inch

圖號
 CR0158